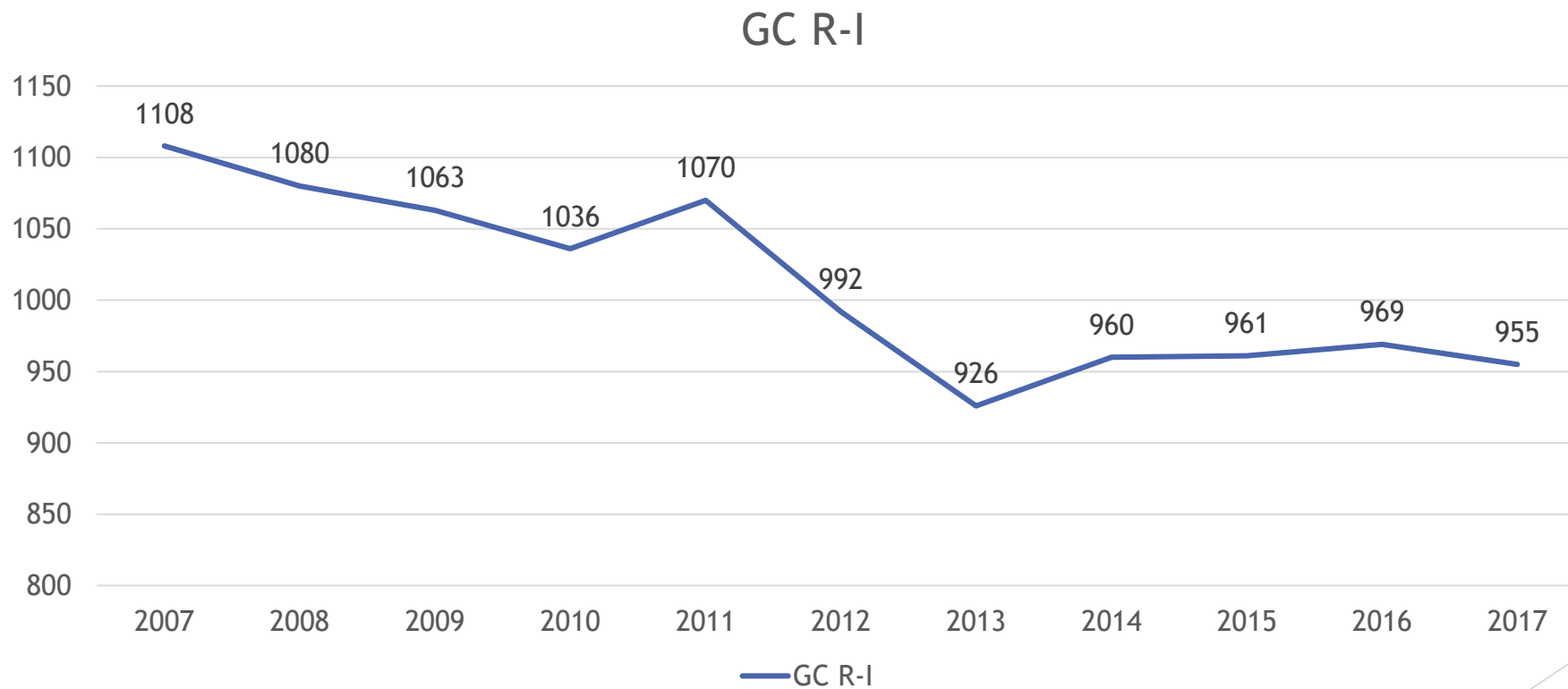


# Gasconade Co. R-1 School District

Financial Overview

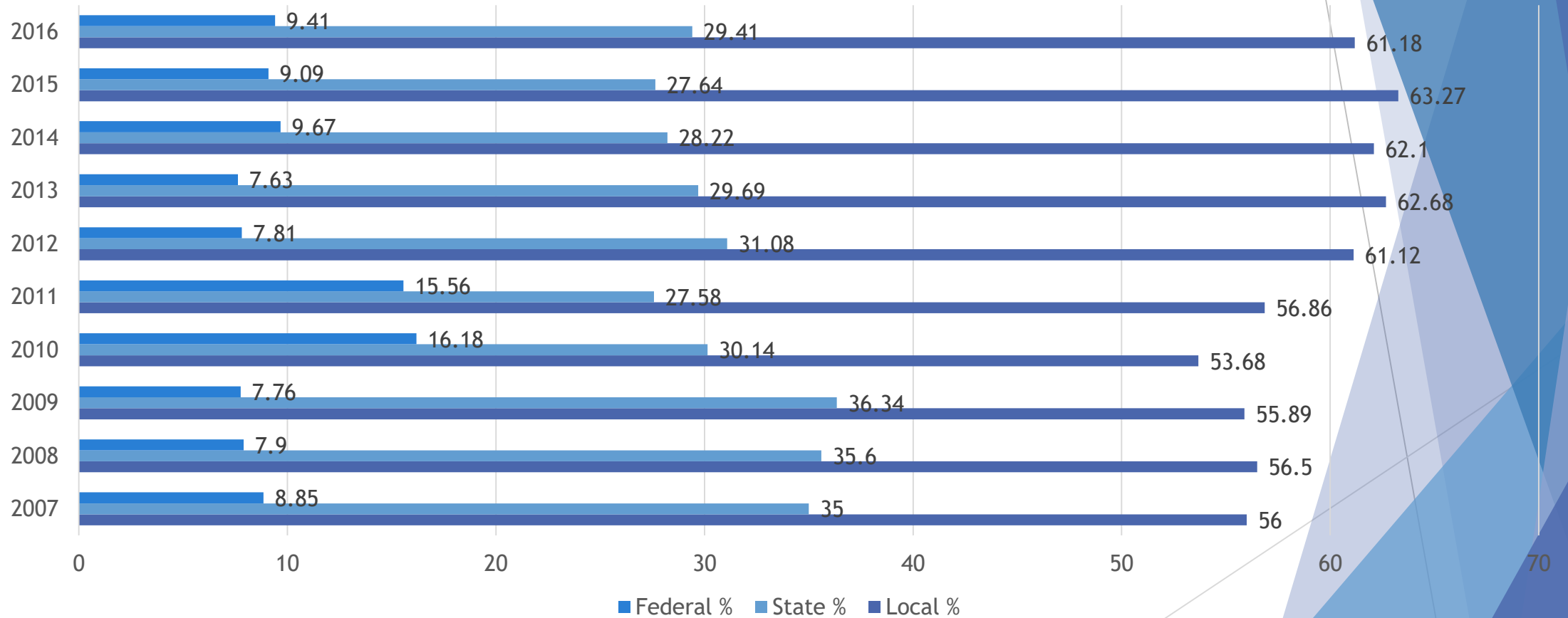


# Total Enrollment 2007-2016



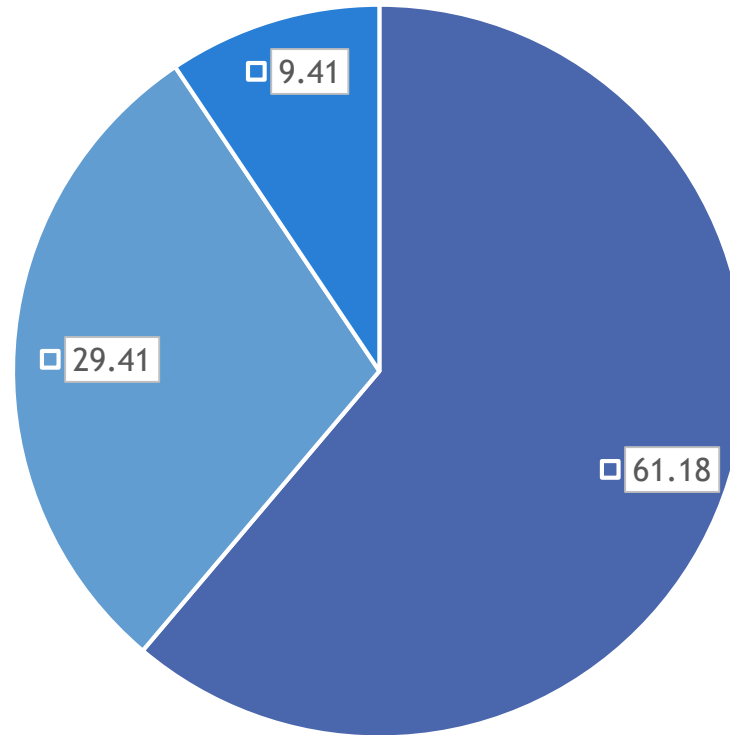
# % of Revenue in the Operating Funds 2007-2016

Revenue Sources



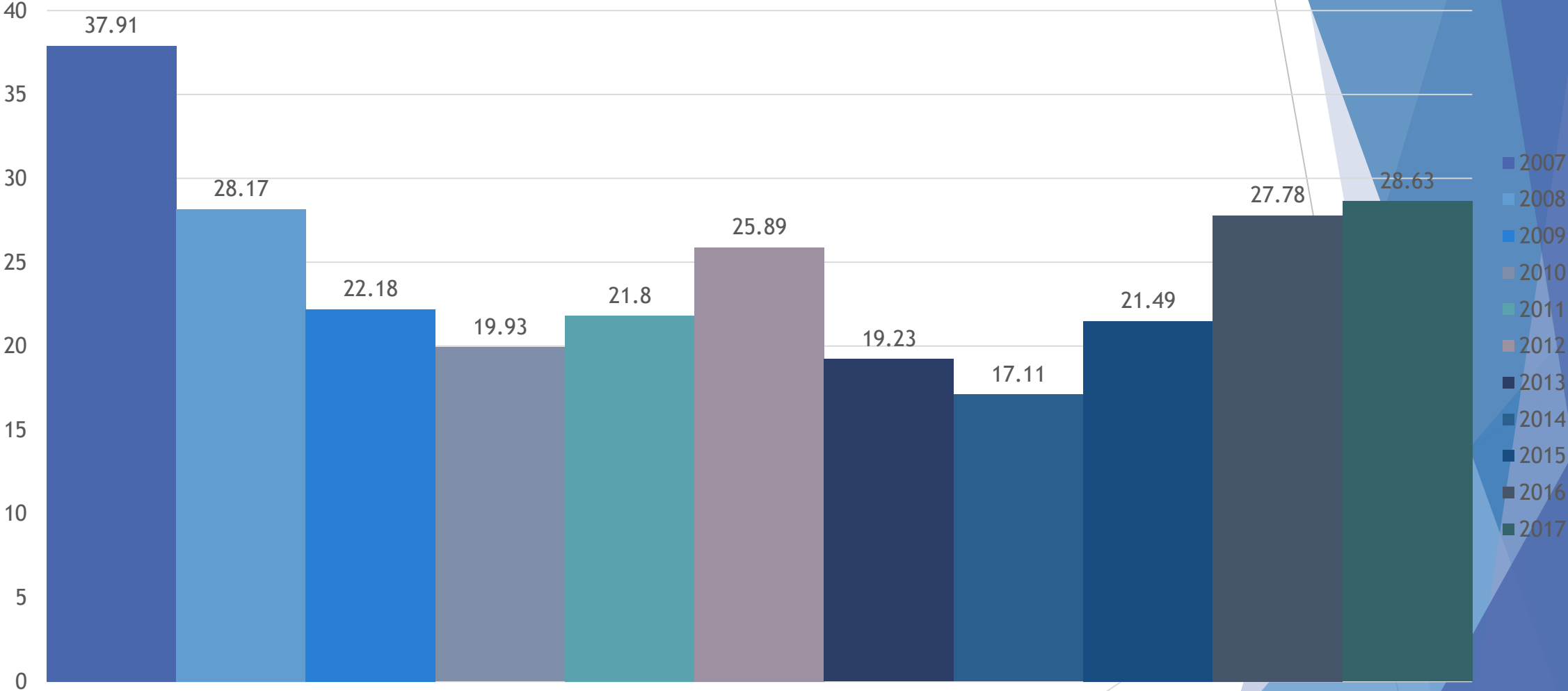
# GC R-I Revenue 2016

Revenue Source



■ Local ■ State ■ Federal

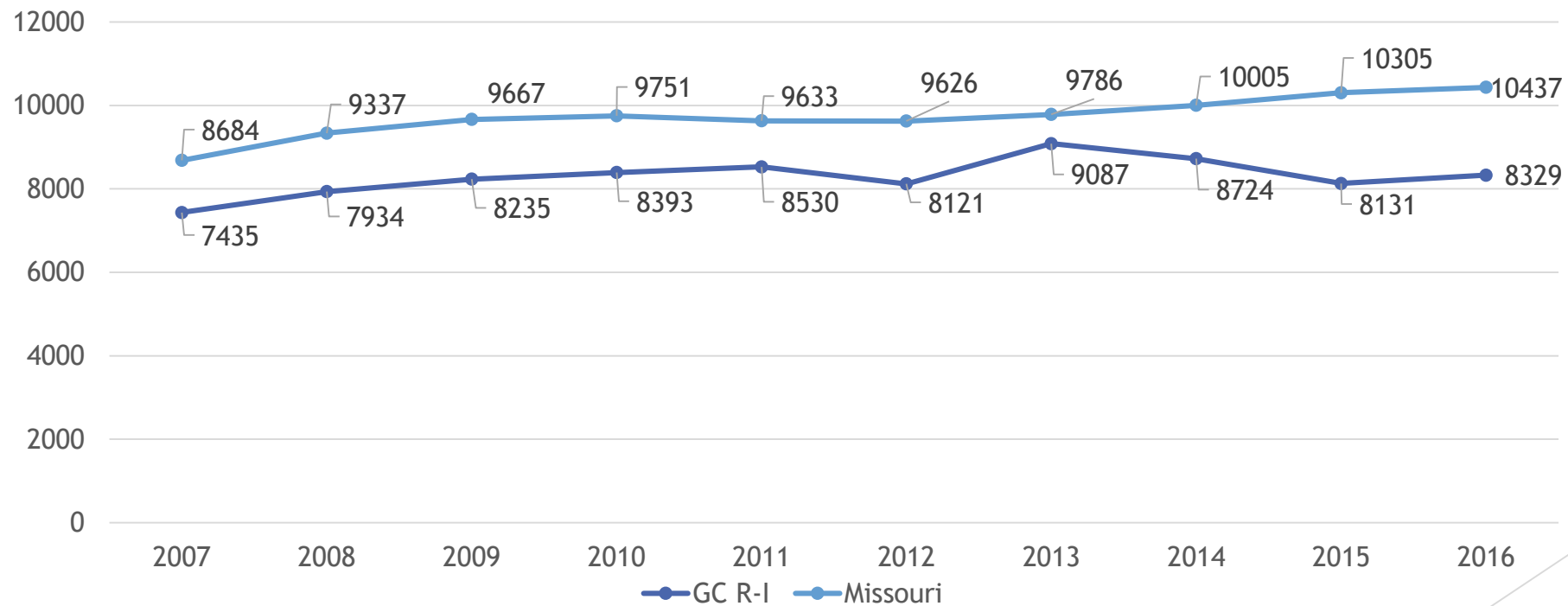
# Unrestricted Ending Fund Balance



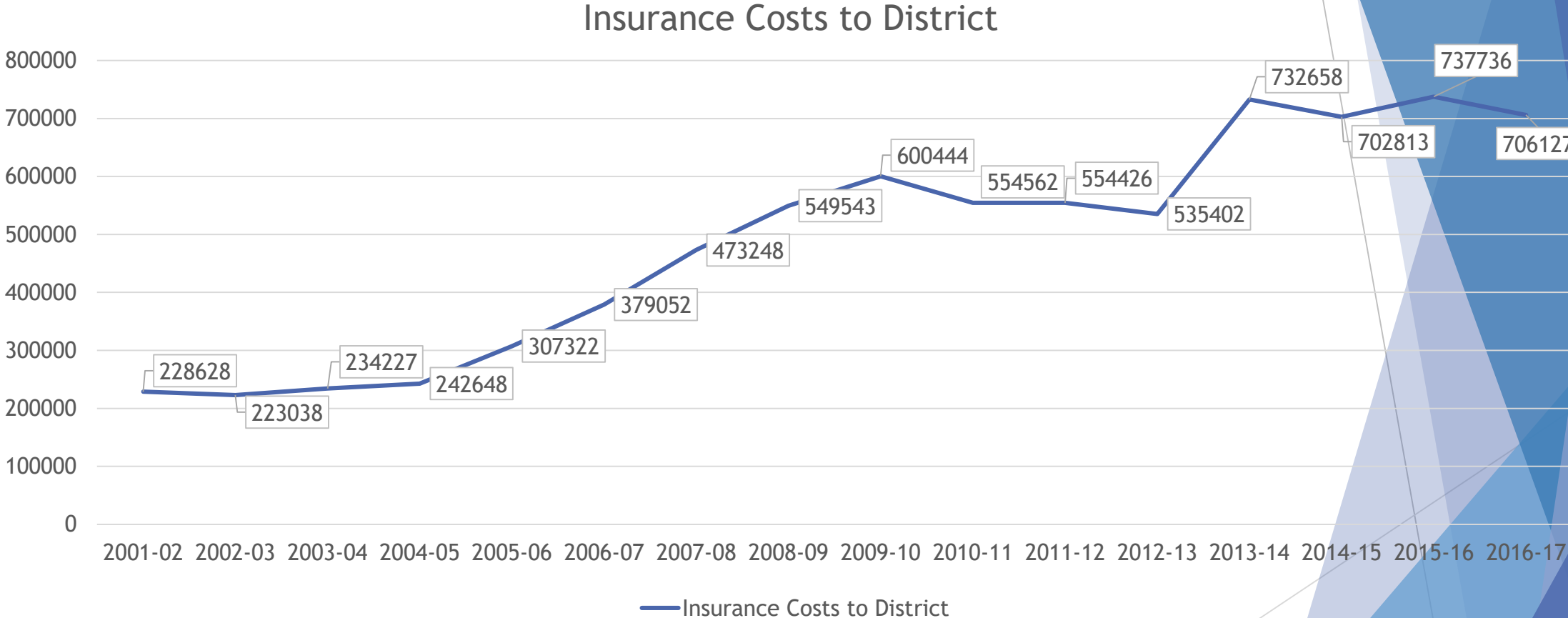
# Transfers Fund 1 to Fund 4 for Capital Projects Expenditures

- ▶ 2000-01 \$314,977
- ▶ 2001-02 \$452,047
- ▶ 2002-03 \$128,294
- ▶ 2003-04 \$542,452
- ▶ 2004-05 \$ 99,920
- ▶ 2005-06 \$0
- ▶ 2006-07 \$508,622
- ▶ 2007-08 \$537,620
- ▶ 2008-15 \$0 (7 yrs)
- ▶ 2015-16 \$226,591
- ▶ 2016-17 \$426,703

# Total Expenditures Per ADA



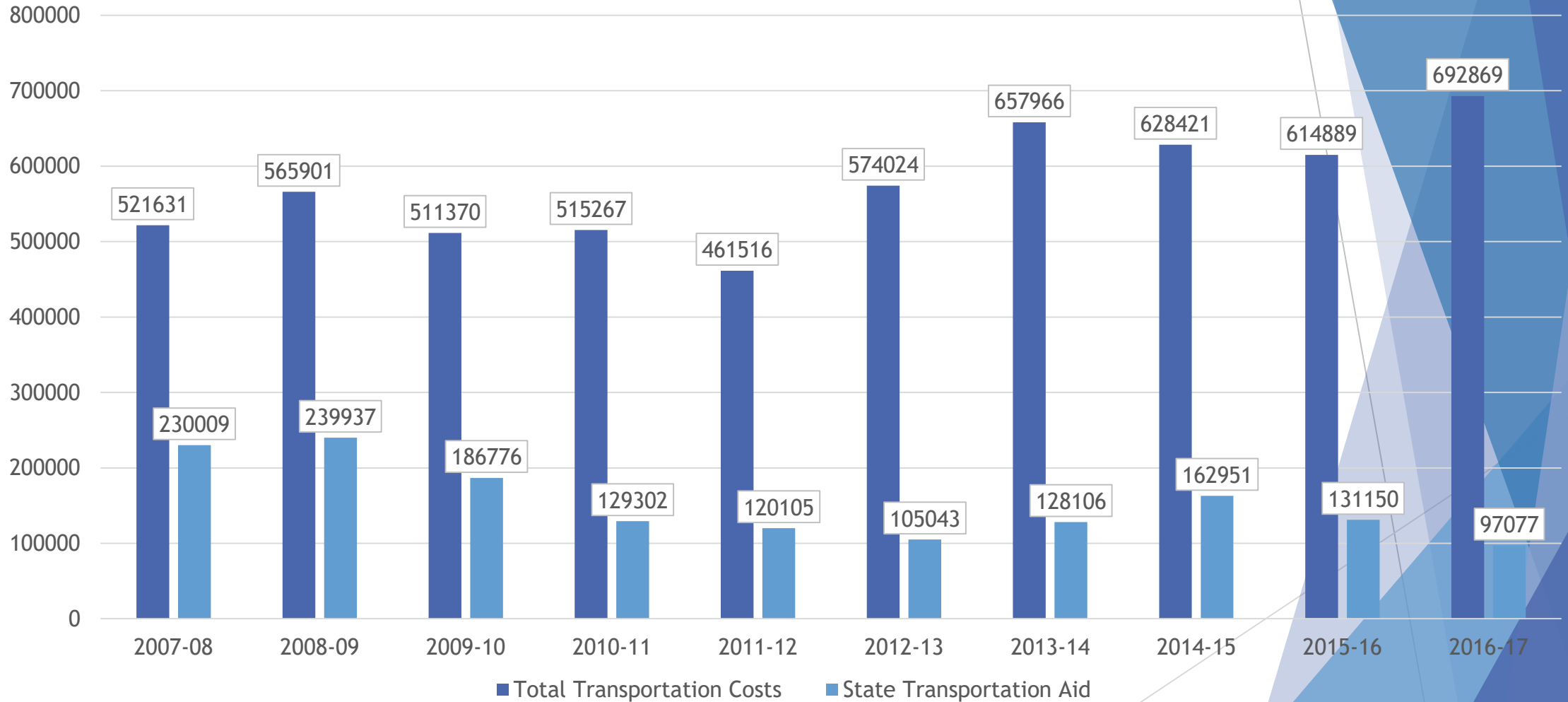
# Employee Insurance Costs



\$477,500 increase in insurance costs base year to 15 years later

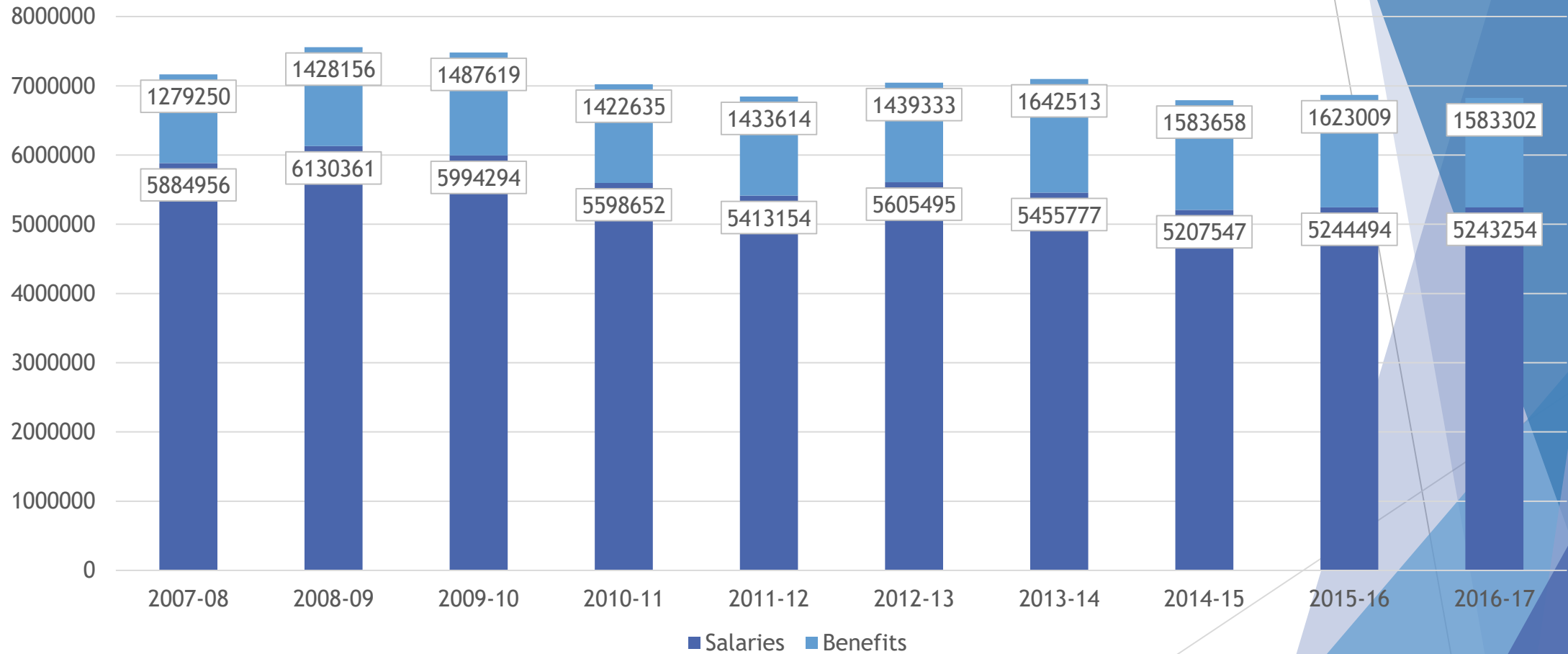


# District Transportation Expenditures & State Revenue



# Salary & Benefit Expenditures

## Personnel Expenditures



# GC R-I Assessed Valuation as of December 31

